

BARTEC®
BV

The Ultimate Splicing System



Dextra

www.dextragroup.com

Product features

Bartec® is a parallel threaded mechanical splicing system designed for the connection of concrete reinforcing bars from Ø12 to 50 mm (ASTM #4 to #18).

Bartec® couplers are designed and manufactured in compliance with Eurocode 2, BS 8110, DIN 1045, ACI 318, IBC, AASHTO, ASME Sec III Div 2.

Benefits

- One standard coupler for all splicing requirements (Standard / Position).
- Easy installation, no torque wrench required.
- No reduction of the bar cross section area.
- Allows full ductile elongation of bars.
- Type 2 coupler suitable for seismic areas.
- Tested under reverse cyclic conditions.
- Solves bar congestion problems.

Site equipment



The 3 machines necessary to Bartec® system rebar preparation are engineered by Dextra and delivered in a single container.

Rebar preparation: A 3-Step Process

STEP 01 Cutting

The end of the reinforcing bar is sawn square.



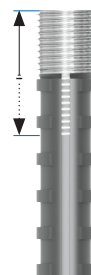
STEP 02 Cold forging

The sawn end of the reinforcing bar is then enlarged by a patented cold forging process. The core diameter of the bar is increased to a pre-determined size.



STEP 03 Threading

Finally, the enlarged end of the rebar is threaded to the required length.



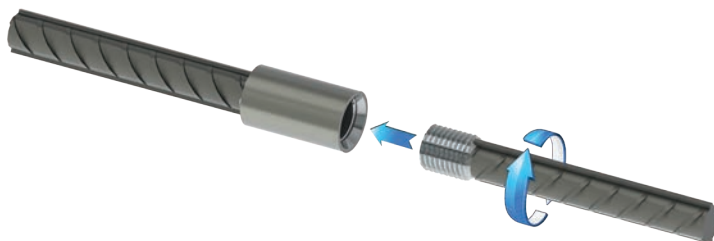
Splicing methods

Standard splice (Type A)

Easy connection by bar rotation until full thread engagement.

Thanks to the parallel thread:

- No risk of thread mis-match.
- No risk of cross-threading.

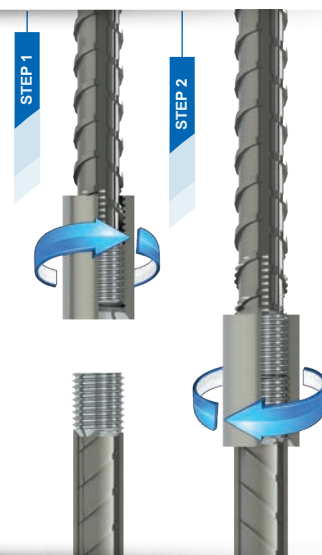


Position splice (Type B)

Even when both bars cannot be turned, the Bartec® system uses a standard coupler.

The coupler is fully engaged onto the extended thread of the connecting bar (step 1).

The assembly is simply completed by bringing the bars end to end and screwing back the coupler onto the first bar until full engagement (step 2).

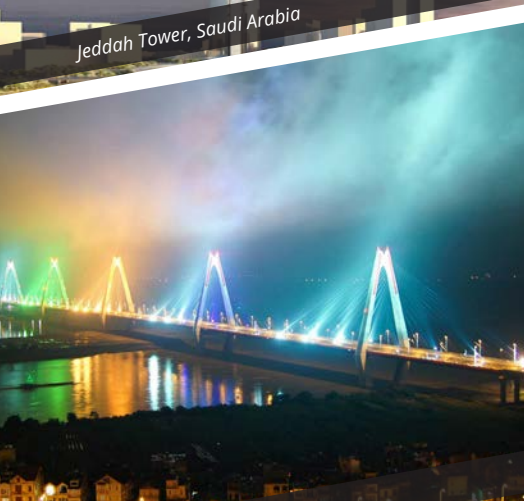


Position splice (Type C)

The Position splice Type C is different from Type B in that it has an additional lock nut to maintain the continuation bar in a determined position.



Jeddah Tower, Saudi Arabia



Nhat Tan Bridge, Vietnam



Landmark 81, Vietnam



Commercial presence
in more than
55 countries



Dextra

**HEADQUARTERS
THAILAND**

Dextra Manufacturing Co.,Ltd.
Tel: (66) 2 021 3800

CHINA

Dextra Building Products (Guangdong) Co.,Ltd.
Tel: (86) 20 2261 9901

HONG KONG

Dextra Pacific Ltd.
Tel: (852) 2511 8236

EUROPE

Dextra Europe SARL
Tel: (33) 1 45 53 70 82

MIDDLE EAST

Dextra Middle East FZE
Tel: (971) 4886 5620

INDIA

Dextra India Pvt.,Ltd.
Tel: (91) 22 2839 2694

NORTH AMERICA

Dextra America Inc.
Tel: (1) 206 742 6020

LATIN AMERICA

Dextra Latam
Tel: (507) 831 1422