

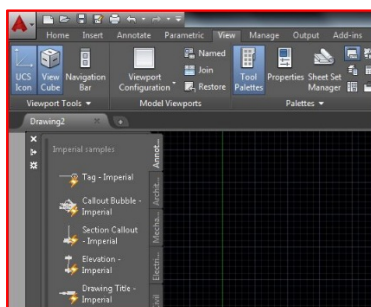


Welcome to Dextra!

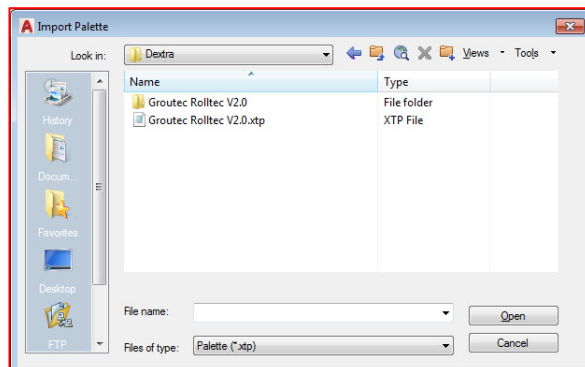
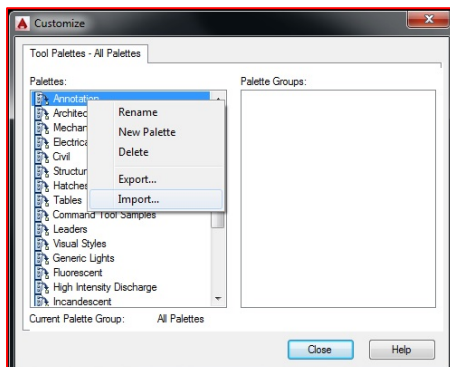
You will find with this **.zip** archive AutoCAD drawings with dimensions of one of Dextra rebar splicing systems. Those drawings have been designed and packaged to save you time when including our range into your designs.

Installation of the palette

1. Extract "Dextra_Grouotec_(Rolltec).zip" file to any convenience location, such as: "D:\Coupler". A "Dextra" folder will be created
2. Open AutoCAD (version 2010 or more recent). Open the OPTIONS command to bring up the setting window. Under the "Search Path" options, add the newly created path in step 1. This will help AutoCAD locate Dextra blocks used in Palettes.
3. You will then need to import our custom Palette. Input the command line TOOLPALETTES (you can also access in toolbar menu "View" and "Tool Palettes").
4. In the new window, click on the "Customize" icon setting.

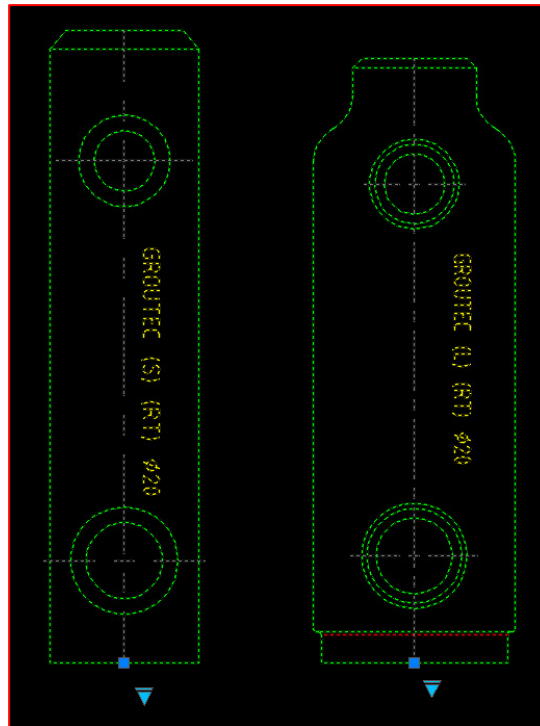
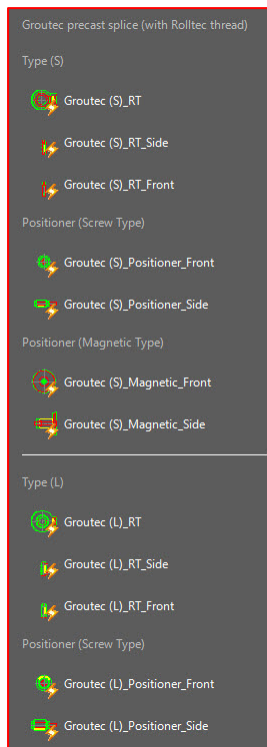


5. Right click in the left column of the pop-up window and select "import...". Locate the "**Grouotec Rolltec V2.0.xtp**" palette file from the previously extracted folder. Palette will automatically import.

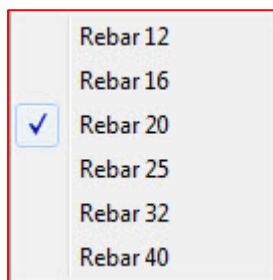


Import products from palette

1. Once Groutec palette is visible, click on the coupler required and position. We recommend the user to also download Groutec Product Datasheet (available on www.dextragroup.com) to have full understanding of the product.

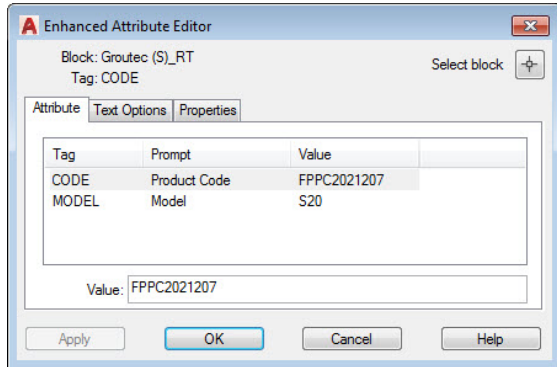


2. The coupler is imported by default at the dimension fitting a rebar of diameter 20 mm.
3. To modify dimensions to fit another rebar diameter, pick the block. A new icon appear:
4. Click on the blue inverted triangle icon [], select another rebar diameter from the drop down menu, dimensions will be adjusted automatically.



About product codes

1. Product Codes (format: FPXXXXXXXX) used by Dextra are directly set into the blocks. Changing dimensions of Groutec will also modify the product code, making it easy to extract data and track the models and quantity of Groutec used.



2. Those Product Codes and quantities can be communicated directly to Dextra teams for order processing.

Updates

Please regularly check www.dextragroup.com to make sure you are using the last version of our product range.

Contact us

Dextra CAD & BIM tools are created for you, help us improve them!

Send us questions, feedback and suggestions to this email address:

cadbim@dextragroup.com

Thank you for using our solutions!