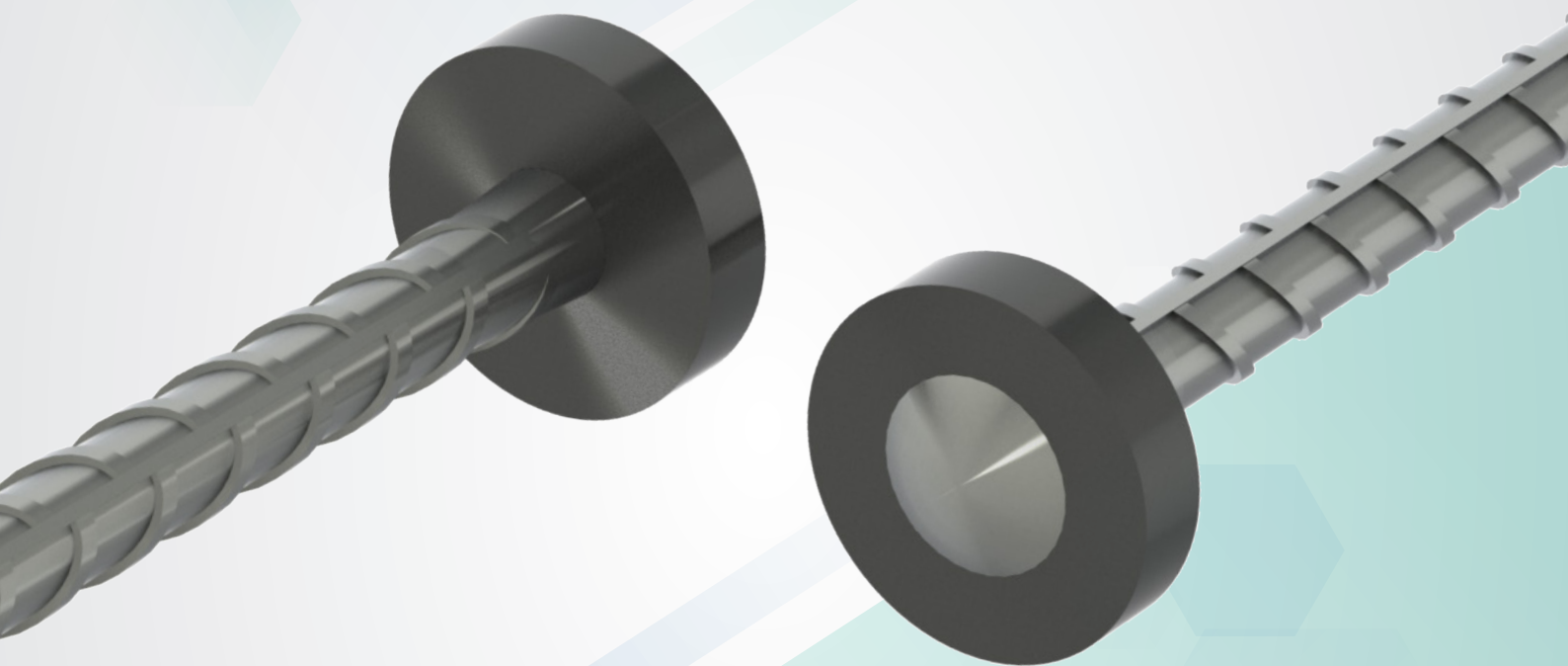


HEADED // **BARS** **PC**

Pressed Connection (PC) headed bars
for links and shear reinforcement



Dextra

Product features

Dextra Headed Bars provide an alternative to a bonded straight or bent length of rebar for the anchorage of reinforcement.

Pressed Connection (PC) Headed Bars are available in 5 rebar diameters ranging from Ø10 to Ø20 mm for links, ties or shear reinforcement.

Performance and certification

Dextra Pressed Connection (PC) headed bars achieve a full “bar break” level of performance. That is to say, when loaded in tension to destruction, it will be the rebar that fails away from the influence of the head or connection.

PC headed bars are CARES approved to the CARES criteria TA1-B and the nuclear product specification TA1-C (Class A)

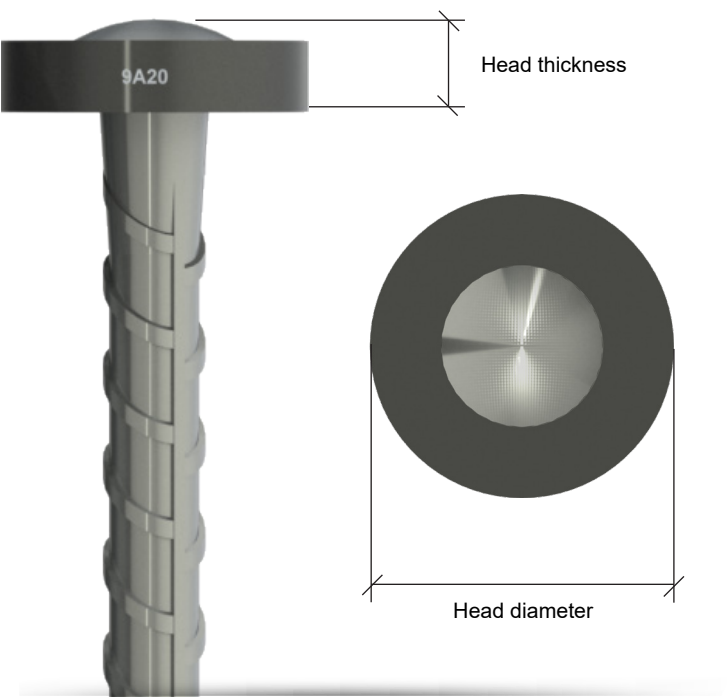
They have been independently tested and show compliance with ISO 15698, Steel for the reinforcement of concrete – Headed bars, for performance categories B3 and S (seismic applications).



Benefits

- Reduces steel reinforcement congestion.
- Eliminates factory and site rebar bending.
- Faster installation on site.
- Allows for the reduction of links by using larger diameter rebar with increased spacing, but without the associated congestion.
- Double ended anchors possible.

Product information

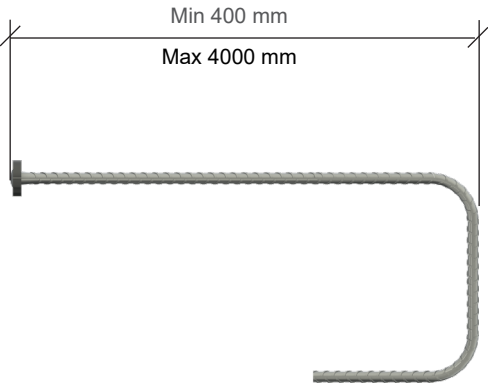


Rebar size (mm)	Product reference	Head diameter (mm)	Head thickness (mm)	Net weight (kg/pc)	Qty per box (pcs)	Gross weight* (kg/box)
Ø10	FPHF1000001	34	9	0.04	500	37
Ø12	FPHF1200001	40	11	0.06	500	47
Ø14	FPHF1400001	45	13	0.09	500	62
Ø16	FPHF1600001	52	16	0.16	500	97
Ø20	FPHF2000001	65	20	0.34	500	187

* Weight inclusive of Dextra wooden box Type 1 (17kg).
Outside dimensions in cm: 43.4 (W) x 63.4 (L) x 43.7 (H)
Inside dimensions in cm: 36.6 (W) x 56.6 (L) x 25.0 (H)

Design information

- Net Bearing Area $\geq 9 \times$ rebar cross section area, complying with the requirements of FIB Model Code 2010.
- In most cases, the size of the head bearing area means that the full rebar tensile design strength can be taken via the head alone, without the need for rebar bond.
- Design assistance can be provided by Dextra.
- Minimum straight length required for fixing of the head: 400mm.
- Maximum straight length required for fixing of the head: 4000mm.

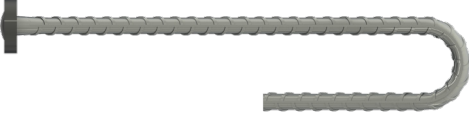


Dextra Headed Bars can be applied to standard shapes as per BS8666:

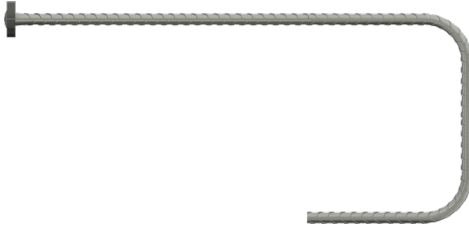
- Shape #00



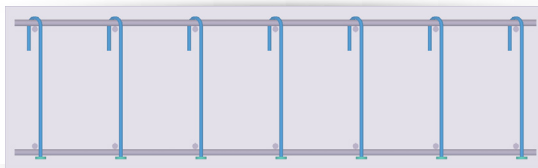
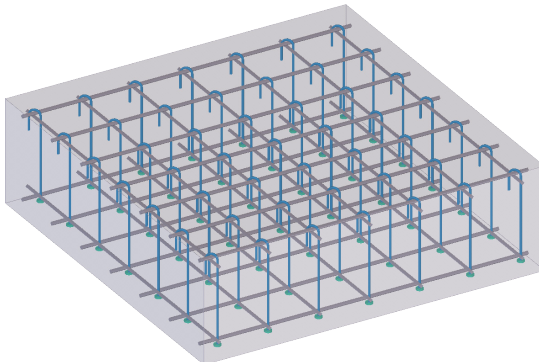
- Shape #13.



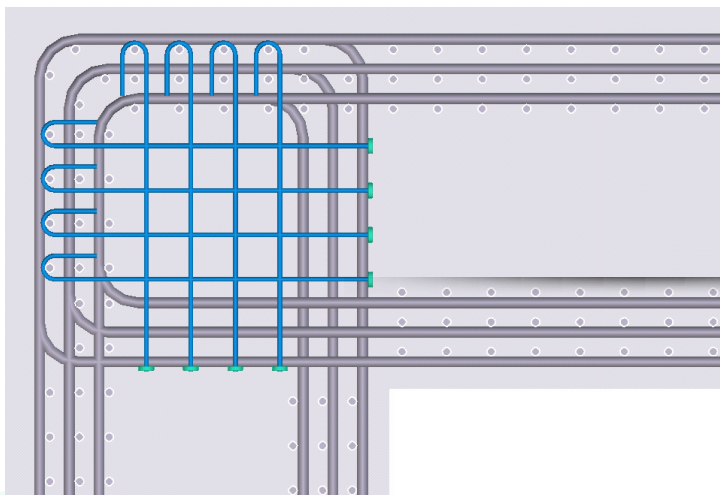
- Shape #21



Rafts and slabs



Wall connections (top view)



Applications



BIM

CAD & BIM tools are available to easily integrate any Dextra product into your construction design.

For more information, please contact the following email address and provide the name and current version of your design software:

cadbim@dextragroup.com



Quality Assurance



Approvals & Certifications



Also in the Dextra® concrete construction range



Griptec®, the high performance rebar splicing solution of the nuclear industry

Sonitec®, smart CSL tubes for concrete integrity testing in foundation piles



Commercial presence
in more than
55 countries



Dextra

**HEADQUARTERS
THAILAND**

Dextra Manufacturing Co.,Ltd.
Tel: (66) 2 021 3800

CHINA

Dextra Building Products (Guangdong) Co.,Ltd.
Tel: (86) 20 2261 9901

HONG KONG

Dextra Pacific Ltd.
Tel: (852) 2511 8236

EUROPE

Dextra Europe SARL
Tel: (33) 1 45 53 70 82

MIDDLE EAST

Dextra Middle East FZE
Tel: (971) 4886 5620

INDIA

Dextra India Pvt.,Ltd.
Tel: (91) 22 2839 2694

NORTH AMERICA

Dextra America Inc.
Tel: (1) 206 742 6020

LATIN AMERICA

Dextra Latam
Tel: (507) 6454 8100

BRAZIL

Dextra do Brasil
Tel: (55) 119 7577 8112