

ROITEC[®]

Mechanical Splicing System



Dextra

www.dextragroup.com

ROLLTEC®

Product features

Rolltec® is a rolled parallel threaded mechanical splicing system designed for the connection of concrete reinforcing bars from ASTM #4 to #18.

Rolltec® couplers comply with ACI 318, IBC 2006, BS 8110, Eurocode 2, DIN 1045, ASME Sec III Div 2.

Benefits

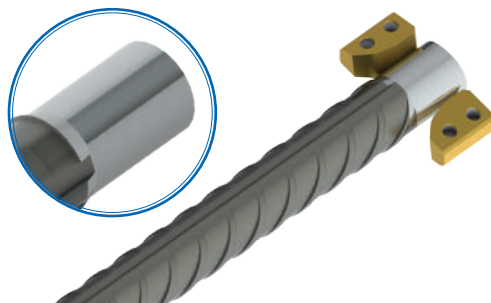
- Practical and economical alternative to laps.
- Simple process: only one machine, one operator.
- Fast cycle time: less than 30 seconds per thread!
- Same coupler model for standard splicing and position splicing (when none of the rebar can rotate).
- Easy installation, no torque wrench required.
- Shortens construction cycle times.

Rebar preparation: 2-Steps process



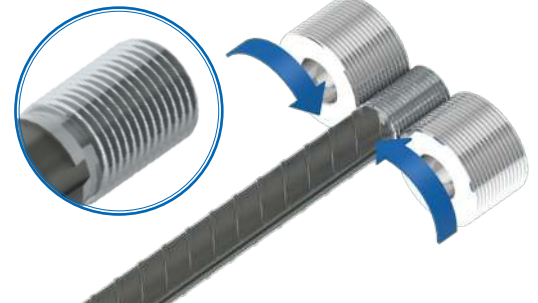
STEP 01 Peeling

The end of the reinforcing bar is peeled.



STEP 02 Thread Rolling

Threads are then formed on the peeled end of reinforcing bar by cold rolling.



Splicing methods

Standard splice (Type A)

Easy connection by bar rotation until full thread engagement (type A method).

Thanks to its parallel thread: no risk of mis-match or cross-threading

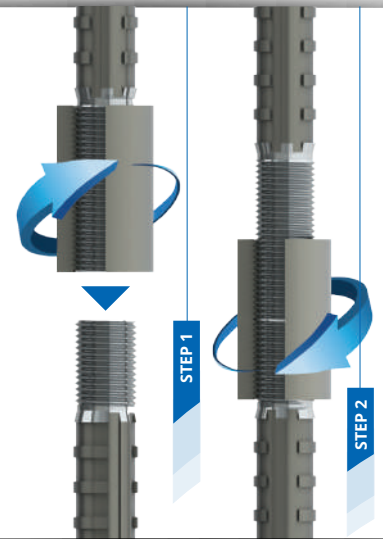


Position splice (Type B)

Even when both bars cannot be turned, the Rolltec® system uses the same standard coupler.

The coupler is fully engaged onto the extended thread of the connecting bar (step 1).

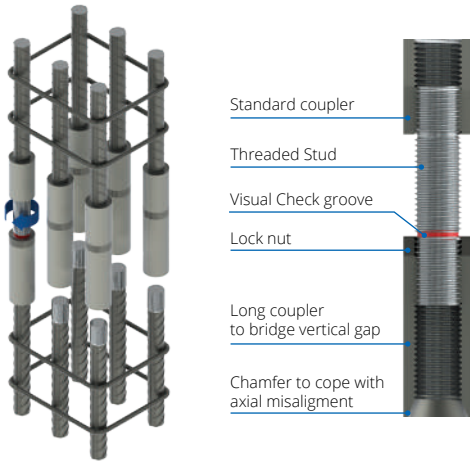
The assembly is simply completed by butting the bars end to end and screwing back the coupler onto the first bar until full engagement (step 2).



Form Fixers

Standard couplers fitted with a square flange that can be nailed to a wooden formwork to facilitate positioning of reinforcement. The connection between the coupler and the flange is not structural. Available for bar size #4 to #11.

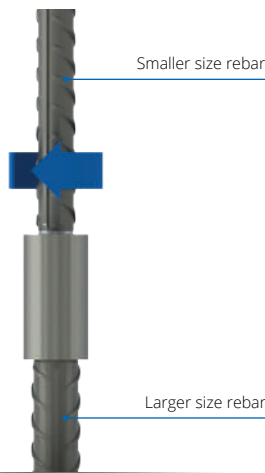
Applications



Caging splice

To connect cages that haven't been pre-fabricated together or sets of bars that can't be brought butt to butt, Rolltec Caging Splice is your solution.

Both bars are threaded with a standard Rolltec thread, then the free rotating elements of the Caging Splice will restore thread continuity and make the connection.



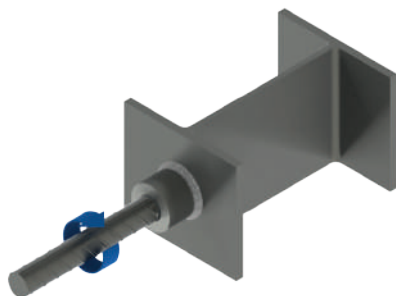
Transition splice

The Rolltec® system offers special transition couplers between various rebar sizes that conveniently avoid the difficult task of planning in advance the need of transitions.



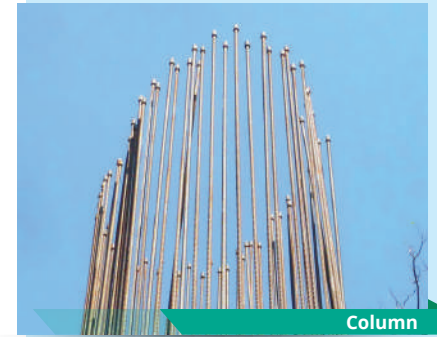
End anchors

A convenient alternative to hooked bars to provide end anchorages in congested areas. Rolltec® standard anchorage heads are circular and have a net bearing area of 4 times or 9 times the cross-section of the bar.



Weldable couplers

For composite construction where concrete reinforcement bars must be welded to structural steel, Rolltec® weldable couplers, specially made from low carbon steel, are available.



Column



Slab connection



Piles and cages connection

Quality Assurance



TH015960

QSC-706



Approvals & Certifications



IAPMO UES 702 & IAPMO UES 789

CL17020493

Design tools

Available on www.dextragroup.com



Note : The information in this catalog is considered up to date at the time of publication. We reserve the right to make technical and design changes at any time.

Dextra shall not accept liability for the accuracy of the information in this publication or for any printing errors.



Jaber Causeway, Kuwait



New Champlain Bridge, Canada



São Paulo Arena Corinthians, Brazil



Commercial presence
in more than

55 countries



Dextra

**HEADQUARTERS
THAILAND**

Dextra Manufacturing Co., Ltd.
Tel: (66) 2 021 3800

CHINA

Dextra Building Products (Guangdong) Co., Ltd.
Tel: (86) 20 2261 9901

HONG KONG

Dextra Pacific Ltd.
Tel: (852) 2845 7766 / 2511 8236

EUROPE

Dextra Europe SARL.
Tel: (33) 1 45 53 70 82

MIDDLE EAST

Dextra Middle-East FZE
Tel: (971) 4886 5620

INDIA

Dextra India Pvt. Ltd.
Tel: (91) 22 2838 6294 / 22 2839 2694

NORTH AMERICA

Dextra America Inc.
Tel: (1) 206 742 6020

LATIN AMERICA

Dextra Latam
Tel: (507) 6454 8100 / 831 1442

BRAZIL

Dextra do Brasil
Tel: (55) 11 5505 2475 / 11 5505 2477