

UNITEC

The Universal Splicing System

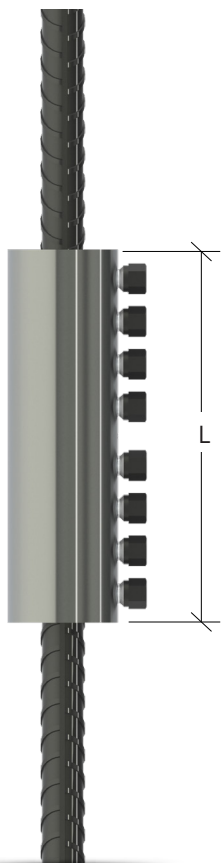
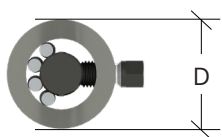


Dextra

www.dextragroup.com

Product features

Unitec is a shear-bolt coupling system for the connection of concrete reinforcement bars from Ø12 to 50 mm.



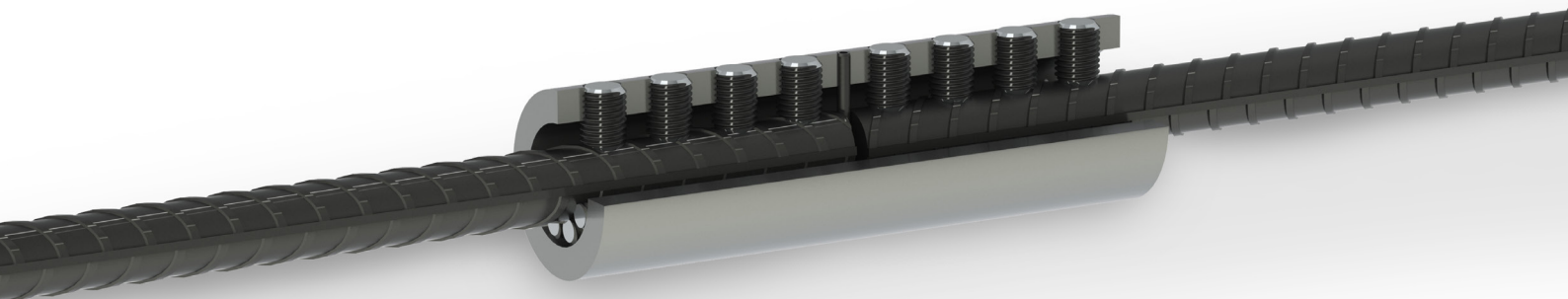
Bar size		Order codes	Coupler dimensions (mm)		Screw size	Total number of screws
Metric	UK		Outside diameter (D)	Length (L)		
12, 12.5	12	FPUS0400002	48	140	M12	6
14, 16	16	FPUS0500002	48	140	M12	6
18, 20	-	FPUS0600002	52	200	M12	8
-	20	FPUS0700002	59	180	M16	6
22	-	FPUS0700003	59	240	M16	8
24, 25, 26	25	FPUS0800002	62	240	M16	8
28	-	FPUS0900002	76	220	M20	6
30, 32	32	FPUS1000002	83	280	M20	8
34, 36	-	FPUS1100002	89	360	M20	10
38, 40	40	FPUS1200002	95	425	M20	12
50	-	FPUS5000002	107	620	M20	18

Transition splicing between two different rebar diameters is also possible using the following models:

Larger bar size		Smaller bar size		Order codes
Europe	UK	Europe	UK	
24, 25, 26	25	22	-	FPUS0800002
30, 32	32	24, 25, 26 28	25	FPUS1000002

Benefits

- Site assembly with standard impact wrench.
- No need of bar end preparation.
- Readily available off the shelf.
- Ideal for concrete-embedded bars, repair and retrofit works, bent bars, etc.
- Type 2 splice as per ACI 318 requirements.
- Complies with BS 8110 and NF A35-020 standards.



Packing

Unitec couplers are packed in wooden crates that should be stored under a roof and protected from natural elements.

Bar size		Order codes	Qty / box (pieces)	Net weight (kg)	Gross weight (kg)
Metric	UK				
12, 12.5	12	FPUS0400002	200	268	292
14, 16	16	FPUS0500002	200	254	280
18, 20	-	FPUS0600002	100	199	224
-	20	FPUS0700002	100	239	264
22	-	FPUS0700003	50	152	177
24, 25, 26	25	FPUS0800002	50	169	194
28	-	FPUS0900002	50	284	308
30, 32	32	FPUS1000002	50	393	418
34, 36	-	FPUS1100002	20	225	250
38, 40	40	FPUS1200002	10	143	168
50	-	FPUS5000002	10	236	261

Note: The weight of the crates varies depending on ambient humidity

Please ensure that order quantities are a multiple of the packaging quantities stated in the table. External dimensions of crate = W 83.4 cm, L 63.4 cm, H 29.0cm.

Quality assurance

Dextra's Quality Management System complies with the requirements of:

- Bureau Veritas ISO 9001:2015 - TH015960
- UK CARES ISO 9001:2015 - 1086
- ASME QSC-706



Each coupler is marked with symbols that enable to trace back to each raw material and production batch data.



Product approvals

Unitec couplers have been certified by the following authorities:



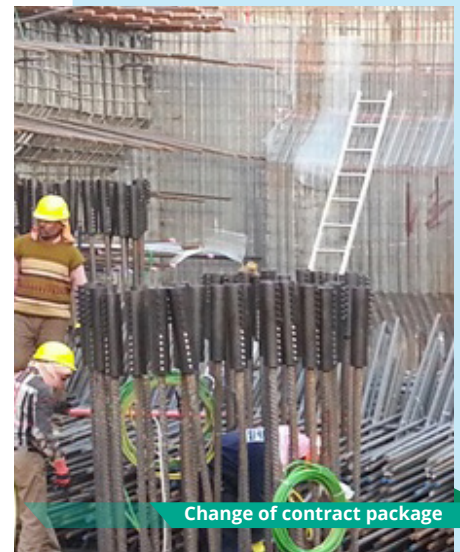
- IAPMO for use with bar size #4 through #14:
 - ASTM A615 grade 60, 75 and 80
 - ASTM A705 grade 60 and 80
 - ISO 6935-2 grade B500B
- UK CARES for use with grade B500B and B500C and bars Ø 12 to 40mm as per BS 4449.
- UK CARES for use with grade B500C and bars Ø 16 to 40mm as per BS 4449.
- AFCAB for use with grade B500B and bars Ø 12 to 40mm as per NF A35080.
- Dubai Municipality Approval for bars Ø 12 to 40mm grade 500.
- Romania Technical Approval number 003-1/143-2020 for use with bars Ø 12 to 40mm.
- Australian Technical Approval for bars Ø 20 to 36mm as per A5660406.
- DIBt for use with grade B500B and bars Ø 12 to 28mm as per DIN 488-1.



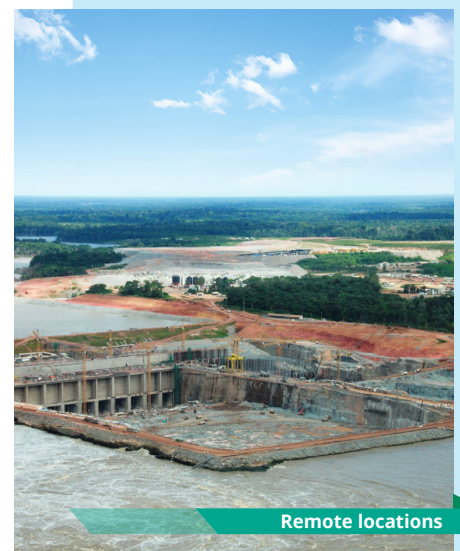
Applications



Repair and retrofitting



Change of contract package



Remote locations



National Bank of Kuwait New Headquarters, Kuwait



Delhi Metro, Delhi, India



Commercial presence
in more than
55 countries



Dextra

**HEADQUARTERS
THAILAND**

Dextra Manufacturing Co.,Ltd.
Tel: (66) 2 021 3800

CHINA

Dextra Building Products (Guangdong) Co.,Ltd.
Tel: (86) 20 2261 9901

HONG KONG

Dextra Pacific Ltd.
Tel: (852) 2511 8236

EUROPE

Dextra Europe SARL
Tel: (33) 1 45 53 70 82

MIDDLE EAST

Dextra Middle East FZE
Tel: (971) 4886 5620

INDIA

Dextra India Pvt.,Ltd.
Tel: (91) 22 2839 2694

NORTH AMERICA

Dextra America Inc.
Tel: (1) 206 742 6020

LATIN AMERICA

Dextra Latam
Tel: (507) 6454 8100