

The Universal Splicing System

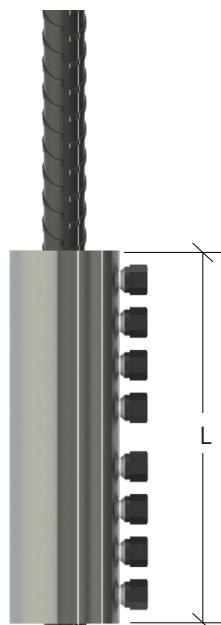
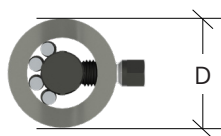


**Dextra**

[www.dextragroup.com](http://www.dextragroup.com)

## Product features

Unitec is a shear-bolt coupling system for the connection of concrete reinforcement bars from ASTM #4 to #18.



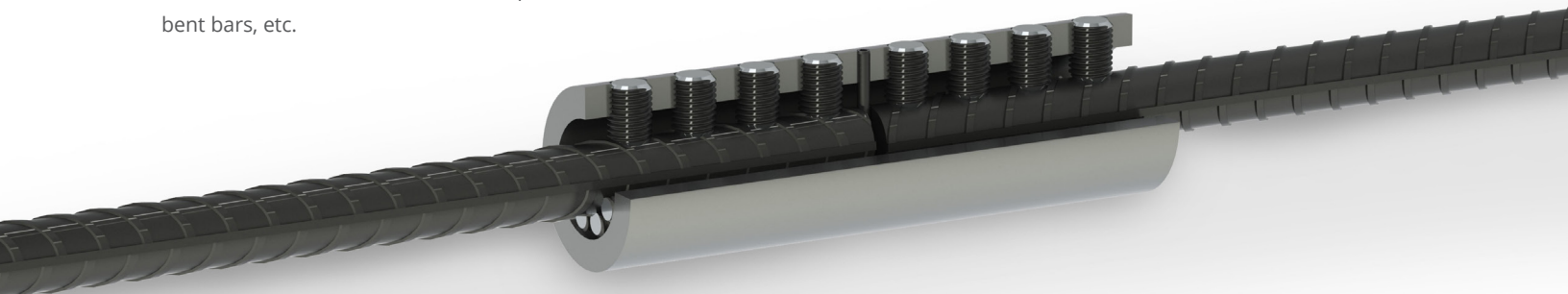
Bar size		Order codes	Coupler dimensions				Screw size	Total number of screws
USA & Mexico	Canada		Outside diameter (D)		Length (L)			
			(mm)	(in)	(mm)	(in)		
#4	-	FPUS0400002	48	1 7⁄8	140	5 1⁄2	M12	6
#5	15M	FPUS0500002	48	1 7⁄8	140	5 1⁄2	M12	6
#6	20M	FPUS0600002	52	2 1⁄16	200	7 7⁄8	M12	8
#7	20M	FPUS0700003	59	2 5⁄16	240	9 1⁄2	M16	8
#8	25M	FPUS0800002	62	2 1⁄2	240	9 1⁄2	M16	8
#9	-	FPUS0900002	76	3	220	8 5⁄8	M16	6
#10	30M	FPUS1000002	83	3 1⁄4	280	11	M20	8
#11	35M	FPUS1100002	89	3 1⁄2	360	14 1⁄8	M20	10
#12	-	FPUS1200002	95	3 3⁄4	425	16 3⁄4	M20	12
#14	45M	FPUS1400002	95	3 3⁄4	555	21 7⁄8	M20	16
#18	-	FPUS1800002	122	4 3⁄4	640	25 1⁄4	M24	16

Transition splicing between two different rebar sizes is also possible using the following models:

Larger bar size		Smaller bar size		Order codes
USA & Mexico	Canada	USA & Mexico	Canada	
#8	25M	#6, #7	20M	FPUS0800002
#10	30M	#8	25M	FPUS1000002
		#9		

## Benefits

- Site assembly with standard impact wrench.
- No need of bar end preparation.
- Readily available off the shelf.
- Ideal for concrete-embedded bars, repair and retrofit works, bent bars, etc.
- Type 1 and Type 2 splice as per ACI 318 requirements.



**Note:** The information in this catalogue is considered up to date at the time of publication. We reserve the right to make technical and design changes at any time. Dextra shall not accept liability for the accuracy of the information in this publication or for any printing errors.

## Packing

Unitec couplers are packed in wooden crates that should be stored under a roof and protected from natural elements.

Bar size		Order codes	Qty / box (pieces)	Net weight (lb)	Gross weight (lb)
USA & Mexico	Canada				
#4	-	FPUS0400002	200	591	644
#5	15M	FPUS0500002	200	560	617
#6	20M	FPUS0600002	100	439	494
#7	20M	FPUS0700003	50	335	390
#8	25M	FPUS0800002	50	410	465
#9	-	FPUS0900002	50	626	679
#10	30M	FPUS1000002	50	866	922
#11	35M	FPUS1100002	20	496	551
#12	-	FPUS1200002	10	315	370
#14	45M	FPUS1400002	10	410	465
#18	-	FPUS1800002	10	809	864

**Note:** The weight of the crates varies depending on ambient humidity

Please ensure that order quantities are a multiple of the packaging quantities stated in the table. External dimensions of crate = W 32.8 in, L 25.0 in, H 11.4 in

## Quality assurance

Dextra's Quality Management System complies with the requirements of:

- Bureau Veritas ISO 9001:2015 - TH015960
- UK CARES ISO 9001:2015 - 1086
- ASME QSC-706



Each coupler is marked with symbols that enable to trace back to each raw material and production batch data.

## Product approvals

Unitec couplers have been certified by the following authorities:



Z-1.3-288



IAPMO UES ER-702



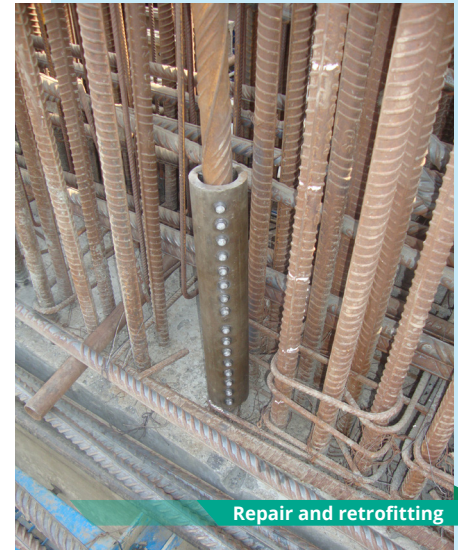
N° M10/013



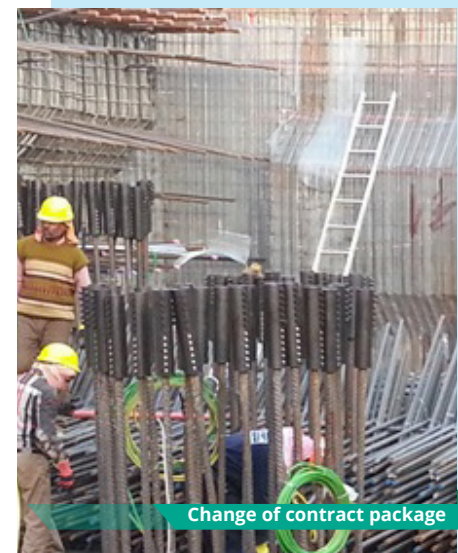
003-1/143-2020

- DIBt for use with grade B500B and bars Ø 12 to 28 mm as per DIN-488-1.
- IAPMO for use with bars size #4 through #14:  
ASTM A615 grade 60, 75 and 80.  
ASTM A706 grade 60 and 80.  
ISO 6935-2 grade B500B.
- UK CARES for use with grade B500B and B500C and bars Ø 12 to 40mm as per BS 4449.
- UK CARES for use with grade B500C and bars Ø 16 to 40 mm as per BS4449.
- Australian Technical Approval for bars Ø 20 to 36mm as per A5660406.
- AFCAB for use with grade B500B and bars Ø 12 to 40mm as per NF A35080.
- Dubai Municipality Approval for bars Ø 12 to 40mm grade 500.
- Romania Technical Approval number 003-01/143-2020 for bars Ø 12 to 40mm.

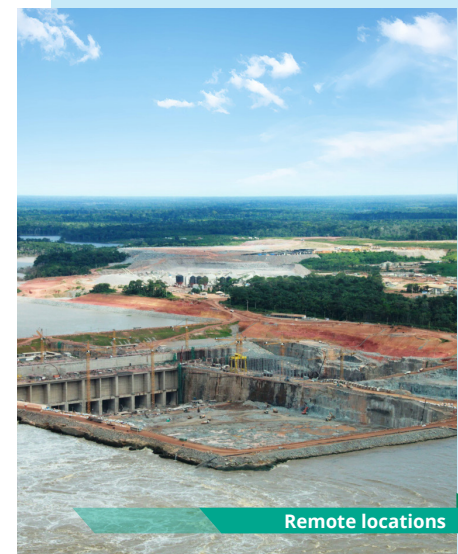
## Applications



Repair and retrofitting

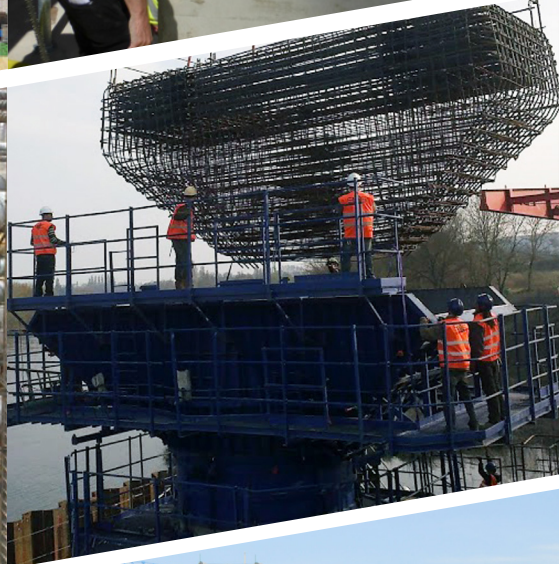


Change of contract package



Remote locations





**Commercial presence**  
in more than  
**55** countries



**Dextra**

**HEADQUARTERS  
THAILAND**

Dextra Manufacturing Co.,Ltd.  
Tel: (66) 2 021 3800

**CHINA**

Dextra Building Products (Guangdong) Co.,Ltd.  
Tel: (86) 20 2261 9901

**HONG KONG**

Dextra Pacific Ltd.  
Tel: (852) 2511 8236

**EUROPE**

Dextra Europe SARL  
Tel: (33) 1 45 53 70 82

**MIDDLE EAST**

Dextra Middle East FZE  
Tel: (971) 4886 5620

**INDIA**

Dextra India Pvt.,Ltd.  
Tel: (91) 22 2839 2694

**NORTH AMERICA**

Dextra America Inc.  
Tel: (1) 206 742 6020

**LATIN AMERICA**

Dextra Latam  
Tel: (507) 831 1422