

FORWARDING SOLUTIONS

General Cargo • Project Forwarding • Industrial Services



Dextra Industry and Transport

www.dextragroup.com

Vision

To be a global leader in engineering and delivery of high value forwarding services: custom clearance, import/export formalities, turnkey project and oversize cargo handling.

Mission

To achieve customer recognition and stakeholder satisfaction by committing to the highest level of performance with integrity, creativity and a passion for results.



About us

Operating in Asia Pacific since 1992 from its Bangkok hub, **Dextra Industry and Transport** has built over the years a dual expertise: transporting super oversized cargo on a door-to-door basis, as well as industrial project dismantling and relocation.

Dextra is well used to the most challenging transportation projects having moved over the last 24 years very large items for power plants, petrochemical, oil & gas industry and many others.

Trusted customer and partners among our references include companies like GE/Alstom, Toyo, CTCL, Doosan, Suez Energy, Black & Veatch, Tecnicas Reunidas, Posco, Herricks Inc, CMI, NEM, Nooter, ABB, Siam Cement, PTT, etc.

Whenever you are looking for a reliable partner expert in Asia and other regions, with strong engineering expertise and a passion for seamless deliveries, Dextra is your solution.



General cargo



Project forwarding



Industrial services

Content

Our commitment to quality	4
Certifications	5
Networks	5
General cargo	6
Project forwarding	10
Industrial installation and relocation services	14
Worldwide references	16

Our commitment to quality



*Jean-Marie Pithon
Chairman & CEO
Dextra Group*

“ Dextra group of companies has been involved since 1983 in providing services to the forwarding, industrial and construction sectors. Our growth over the years is the result of our uncompromising commitment to customer’s satisfaction and passion for flawless solutions and execution.

Our forwarding division makes no exception to those principles and you can be ensured that your goods and projects will be moved towards their final destination in a safe and timely manner thanks to our dedicated teams of highly qualified and experienced professionals. ”



Certifications



MIFFA
Myanmar
International
Freight Forwarder
Association

ISO 9001
VIETNAM

ISO 9001
THAILAND

ISO 14001

AEO
certification

Member of the
Thai Licensed
Customs Broker
Association

Thailand
Authorized
Custom Broker

ISO 9001 & 14001

Since 2009, Dextra forwarding division's systems are accredited by Perry Johnson to be compliant with ISO 9001:2008.

Our customers can be ensured that we will provide services in respect to international quality standards thanks to well implemented and continuously improving internal quality procedures.

AEO

Dextra Industry and Transport is an Authorized Economic Operation body approved by the Thai Customs Department (certificated #5).

As such, we are part of WCO's goal (World Customs Organization) in establishing an international and secured supply chain along with all actors from origin to destination.

Multimodal Transport

As a Multimodal Transport Operator (or MTO) certified body, Dextra, thanks to polyvalent capacities, is able to handle complex forwarding projects which require several transport modes.

Therefore, Dextra is your single one stop service provider for your door-to-door turnkey project.

Networks

Dextra is part of WCA World and IFLN networks, so we are able to handle goods from/to virtually any place in the world.



General Cargo



General cargo

Using its worldwide network, Dextra Industry and Transport provides door-to-door delivery for a wide range of products, including perishables, raw materials, consumer goods, frozen and low temperature products, medicines and many other goods.

Seafreight

Dextra offers container as well as conventional and bulk vessels. We have daily access to over 300 vessels position, enabling us to find the right ship with the right schedule and providing routing to the five continents.



Airfreight

Dextra offers a wide range of cargo flights with routes on five continents. We can deliver cargo ranging from a few kilos up to over 130 Tons.

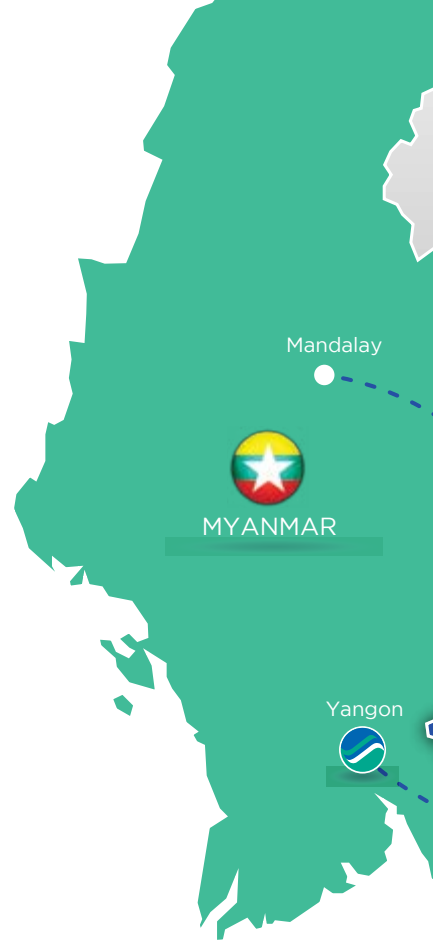


Out of Gauge Cargo (OOG Cargo)

Out of Gauge cargo requires the use of special equipment such as Flat Rack and Open Top containers and many others upon specifications of the cargo to be transported and routes. Dextra has an extensive experience with OOG Cargo, ensuring safety of your cargo during loading, lashing, shocking into containers. We can also supply supporting certificates, drawings and calculations etc, when relevant.

Dangerous Cargo Handling

Dextra Industry and Transport also handles shipments of Dangerous Cargo such as critical ones radioactive class 7 cargo.

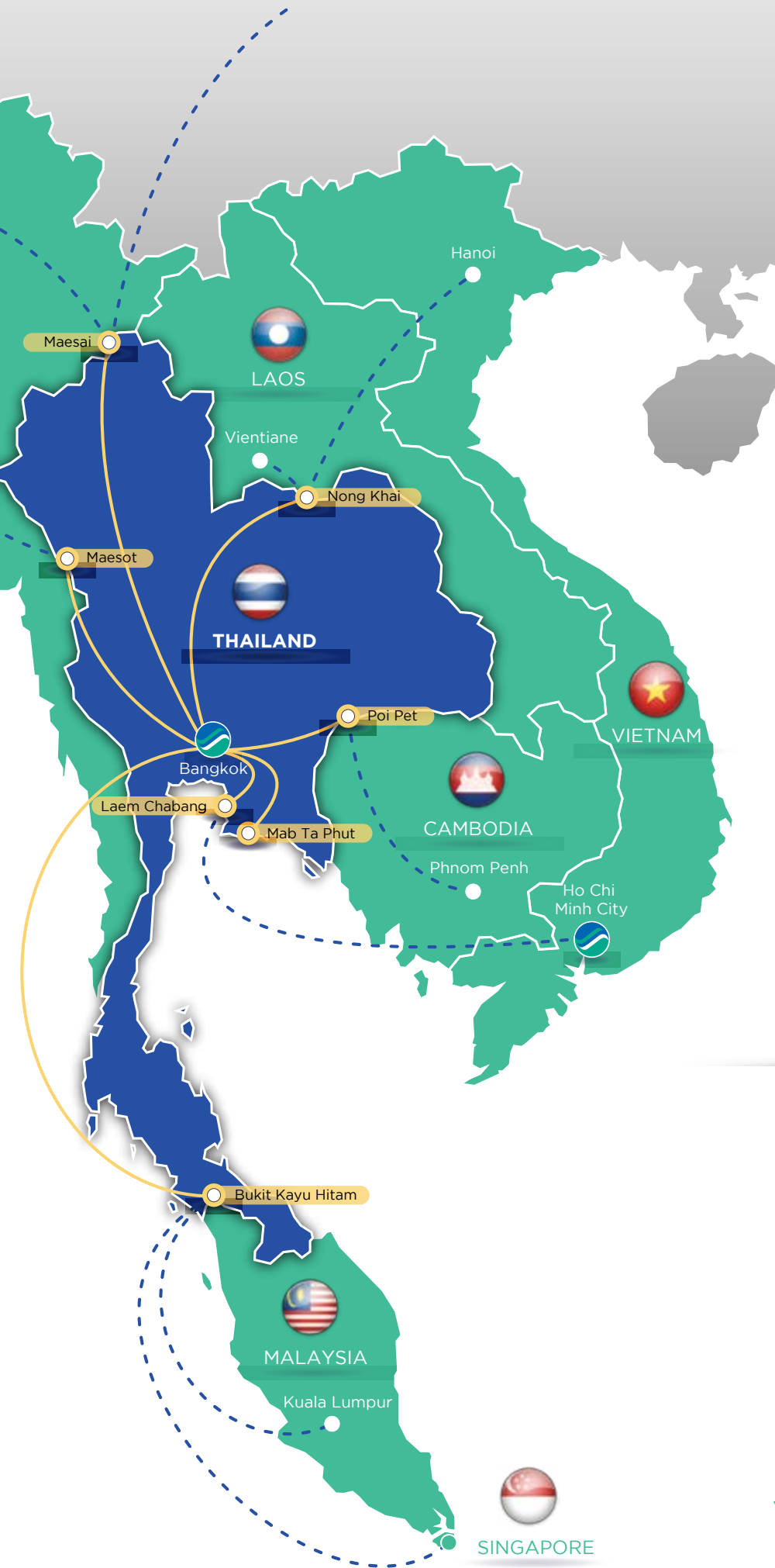


Accredited Broker

Our goal is to relieve our clients from all import/export process hassles.

We handle on their behalf all custom and tax refunds/exemptions process such as BOI, 19Bis, Blue Corner.

To facilitate and speed up all customs procedures, we are permanently and electronically linked to the EDI and paperless customs system.

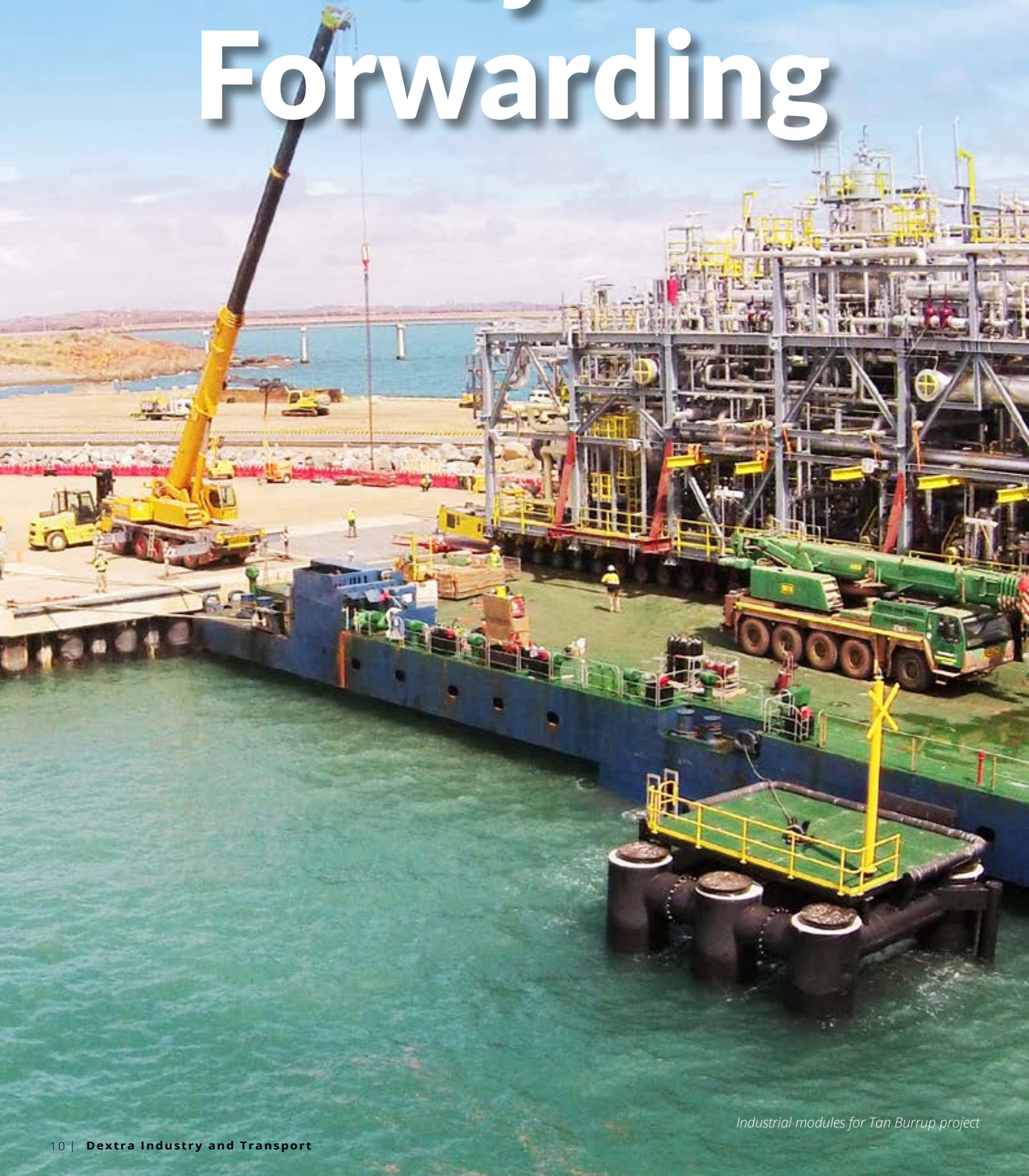


Cross Border Delivery

Thanks to our offices established in Myanmar and Vietnam, along with our partners' network in neighboring countries, Dextra monitors inland cross border transport ensuring clearance at border points and transshipments when necessary.

Inland Cross Border Delivery is a quicker option than seafreight for regional continental movements and tends to be more and more developed between ASEAN member countries.

Project Forwarding



Industrial modules for Tan Burrup project

Project forwarding

Study,
Engineering
& Design

Study, Engineering & Design

To support all our activities and to comply with today's safety standards, our engineers can offer a wide range of services, including but not limited to: Feasibility study, Road survey, Method Statement, Operation Procedure, Transport configuration drawings, lifting drawings, special design of gantry system, skidding system, lifting beams design.

Lifting

Oversized & Heavy Cargo / Lifting & Transportation

For lifting >> With our lifting capacity reaching up to few thousands tons, including crawler crane, mobile crane, gantry system, jacks and others, Dextra will assist you for all loading / unloading – indoor / outdoor installation.

By land >> With our selection of specialized flat bed, low bed, long bed, drop deck trailers, conventional hydraulic or self propelled modular trailers, we will find the equipment that fits your cargo specifications.

By sea >> Using Barge, self-propelled barge, gear vessel, semi-submersible vessel, our marine services will cover any of your project requirements.

By air >> Delivering cargos anywhere in the world. To that end, Dextra provides tailored cargo flights corresponding to clients' requirements.

Land, Sea, Air
Transportation

More with Dextra:

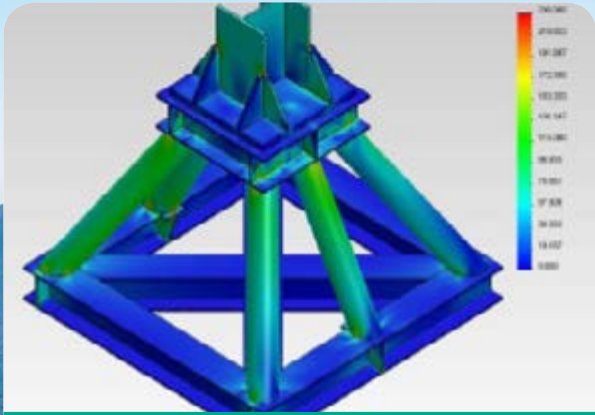
Self Propelled
Vessel voyage
and Load Out

Ultra-Heavy and Modular Cargo Load Out

For Ultra Heavy cargo, which is common in oil and gas industry such as jackets, offshore platforms, FPSO Modules, Dextra provides its clients with complete solutions including weighting, haulage, mooring and ballasting calculations, load out onto barges, grillage, sea fastening and sea transport.

To support such activities, our Engineering Department will supply a comprehensive Method Statement, which includes the documentation required by International Marine Warranty Surveyor Standard.

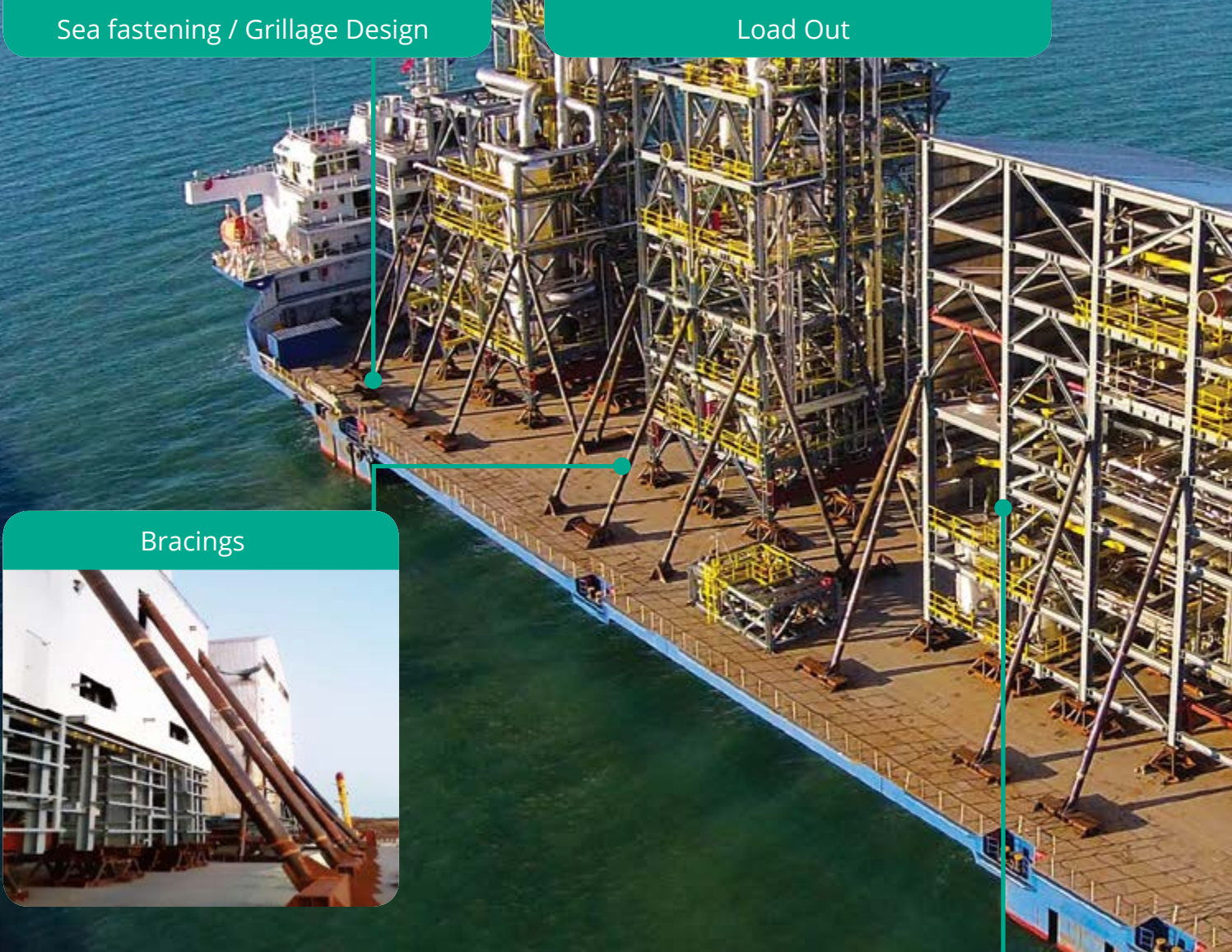
- Weighting and/or Transport Procedure.
- Transport Drawings and stability calculation.
- Ground Bearing Pressure.
- Quay Strength Analysis.
- Barge Layout drawings and load out sequences.
- Load out procedure and drawings.
- Barge Motion and acceleration analysis
- Stress analysis on barge/vessel deck, access ramp etc.
- Hard seafastening and grillage design, fabrication and installation.
- SPMT rolling path footprints drawing.
- Risk assessments
- All supporting documents for the equipment used such as certificate, maintenance record, personal qualification, etc.



Sea fastening / Grillage Design



Load Out



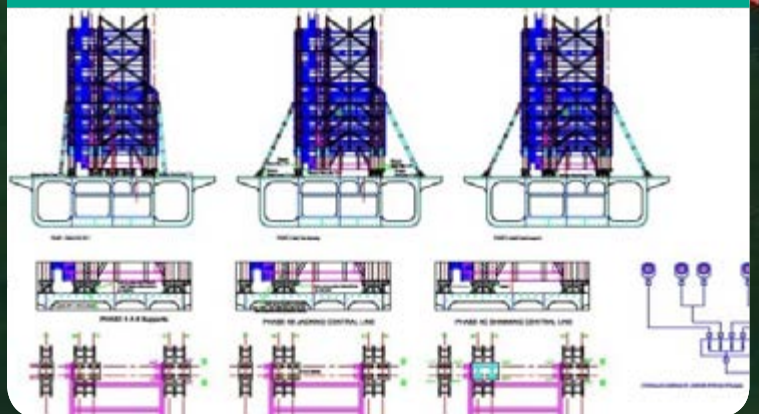
Bracings



Jacking / Shimming

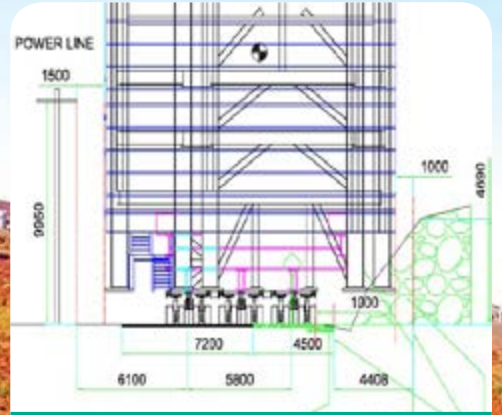


Stowage

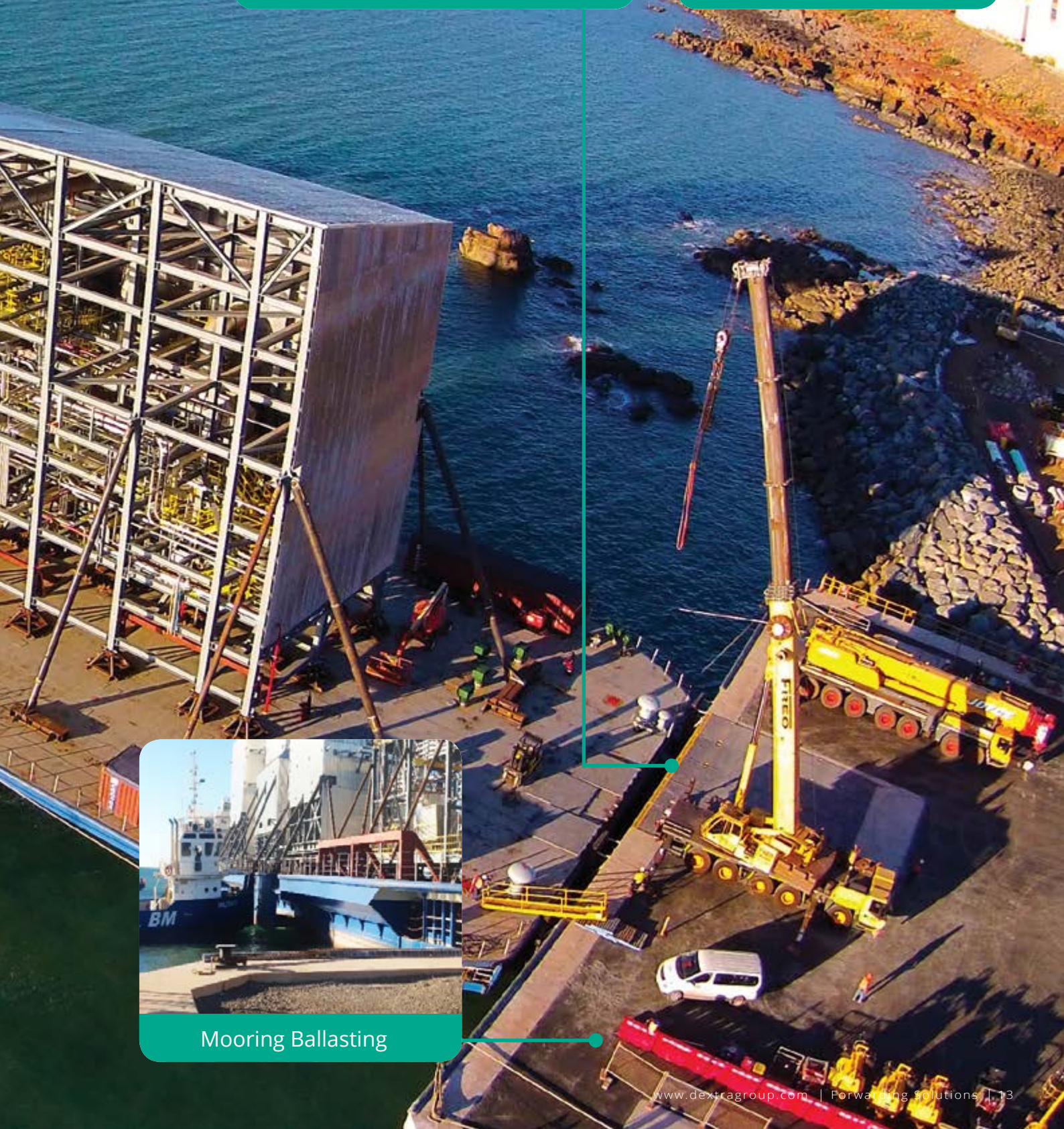




Roro Ramp



Road Survey



Mooring Ballasting

Industrial Services



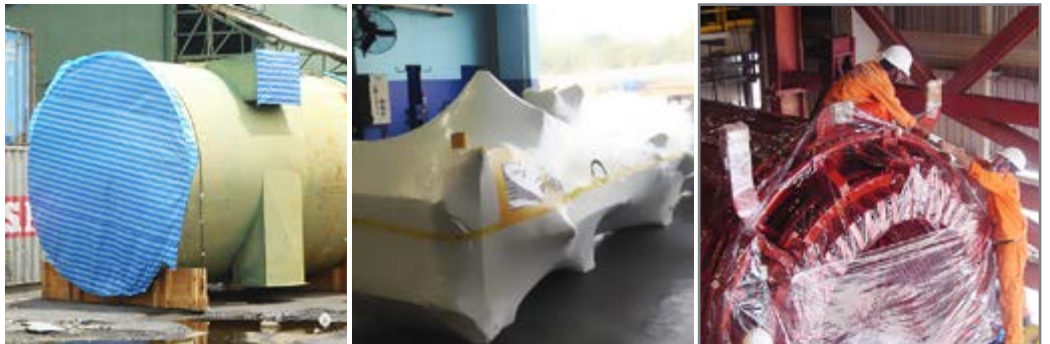
Industrial services

Dextra is also specialized in installation and relocation services. Thanks to our professional and experienced team, we can dismantle complete factories and ship them to destination in the world. For industrial dismantling, Dextra offers additional services of factory clearance and removal of obsolete plant and machinery.

Dismantling



Packing & Handling



Jacking & Gantry



01

Worldwide References



03



04





01 Industrial modules Tan Burrup project

Numerous sea/land shipments
(up to 800 tons) from Batam
Indonesia to Western Australia
2013-2014

02 Crossover ducts hydrogen production facility

Petronas RAPID (Refinery And Petrochemical
Integrated Development) Package 3
2016



03 Industrial farming equipment for CP Group

Feedmill bins. Loading from
Bangkok Port to Yangon MIP
2016

04 ARTHIT project CO2 separator offshore module

Load out at Laem Chabang construction
yard, to Batam, Indonesia
2006-2007



Successful projects with

ABB	Black & Veatch	Eastern Industrial Gas	Hamworthy
Air Liquide	B.L.P.C.	EGAT	Honeywell
Aibel	Bluescope	Engie	Isan Sugar
Aker	Bouygues	Five Cail	Isoroy
Amata Power	Corbion	General Electric	Italian Thai
Aventis	CMI	General Motors	Itochu
Balt ec	Danchang	Glow	Komatsu



06

**05 | Gas Turbine outage
General Electric**

Bangkok, Thailand
2017

**06 | Gas compressor
General Electric Pignone
to TPE Siam Cement Chemical**

Loading at Livorno Port, Italy
to Map Ta Phut Port, Thailand
2016

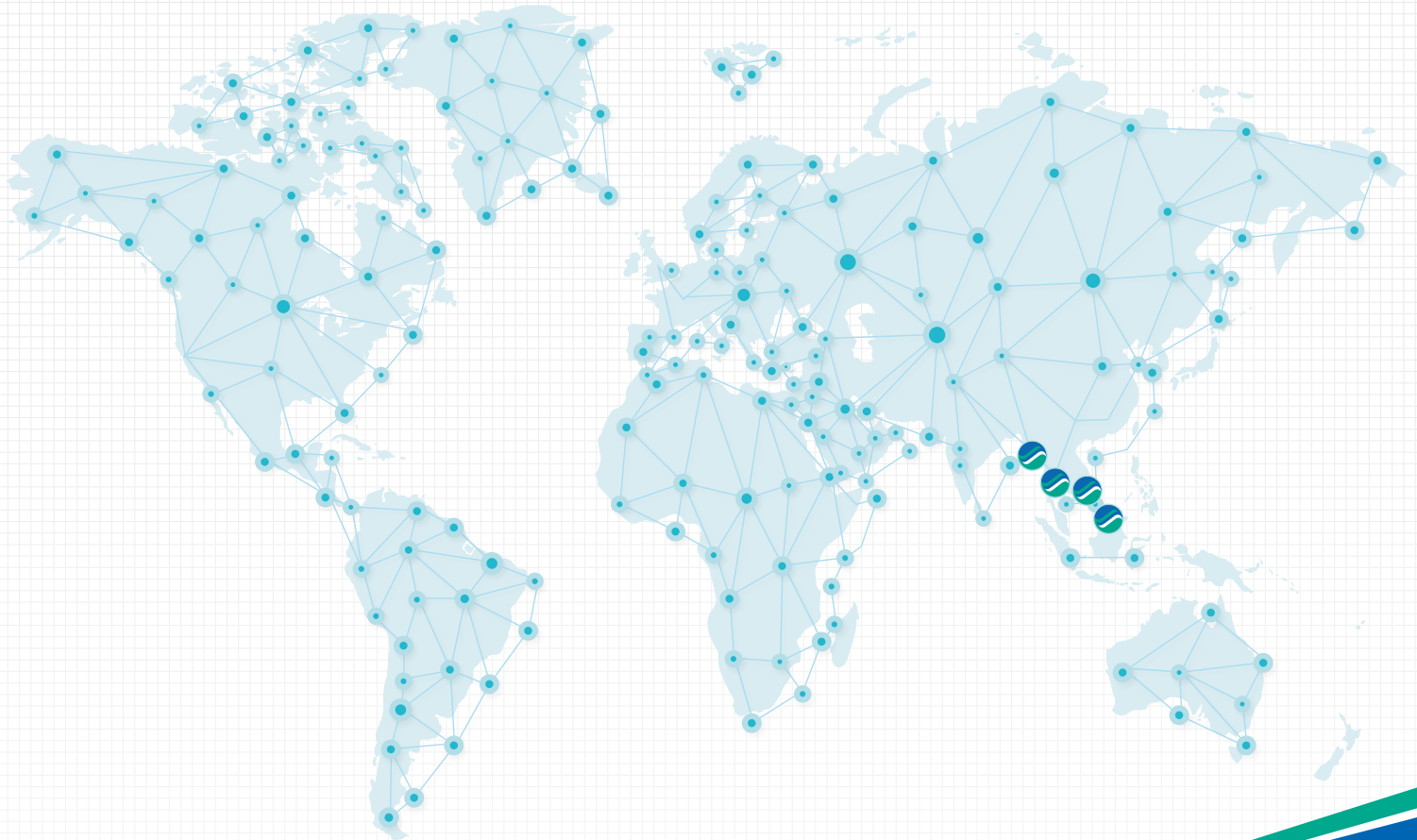


07

**07 | S&T Corporation
3 diverters of 65 Tons**

Loaded at Cat Lai, Vietnam
to Assaluyeh, Iran
2017

Kvaerner	MOC	N.K.K.	Siam Cement Chemical	Thai Herrick
Lafarge	Modec	POSCO	Soletanche	Toyo-thai
L.P.N	National Power supply	PTT	Solvay	Tri Energy
MRTA	NEM	Phu Khieo Bio Energy	Stein Heurtey	Unilever
Merlin Gerin	Nestlé	Samut Prakam Cogeneration	Sumitomo	Vanachai / Partex
Metro Fiber	Nong Khae Cogeneration	Schneider Group	Stejasa	Vinythai
Michelin	Nooter	Sekurit Saint Gobain	Técnicas Reunidas	VSL
				WorleyParsons



Dextra Industry & Transport is part of **Dextra Group**, a global group of companies with operations in more than 50 countries providing technical solutions (products, equipment and services) to the construction and industrial sectors.



Dextra

www.dextragroup.com/contact

Main offices

HEADQUARTER THAILAND
Dextra Industry and Transport Co., Ltd.
Tel : +66 2 119 4400 / 4488
Fax: +66 2 651 8005
Email: transport@dextragroup.com

VIETNAM
Dextra Transport Vietnam Co., Ltd.
Tel : +84 835 126 050 | 051
Fax: +84 835 126 053
Email: vietnam@dextragroup.com

MYANMAR
Dextra Transport Myanmar
Tel : +95 9 25 4425 253
Email: aly@dextragroup.com

BRUNEI
Dextra-Fracht Brn Sdn Bhd
Tel: (66) 2119 4488