

Visit us at
virtual booth
#SS11

GROUND ENGINEERING SOLUTIONS



Dextra

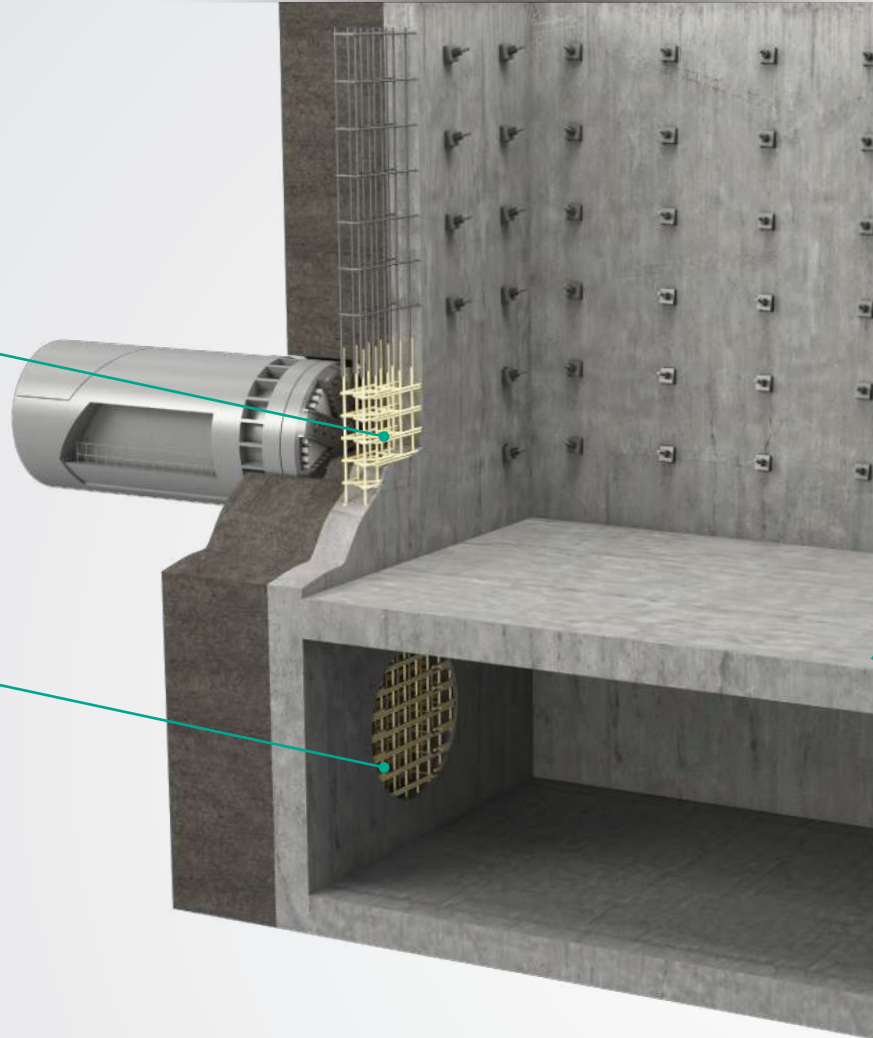
Soft-eyes

Soft-eye facilitates the penetration of the Tunnel Boring Machines (TBM) through d-walls and secant piles.

- Speed up the construction schedules.
- No demolition equipment needed.
- Commit on safety. No workers required to access the shaft.

Temporary

The typical Soft-Eye application. The cage is made of GFRP bars, which will be cut by the TBM during breakthrough.



Permanent

Permanent Soft-Eyes (lifetime up to 100 years) may be pre-positioned for future tunnels and stations.

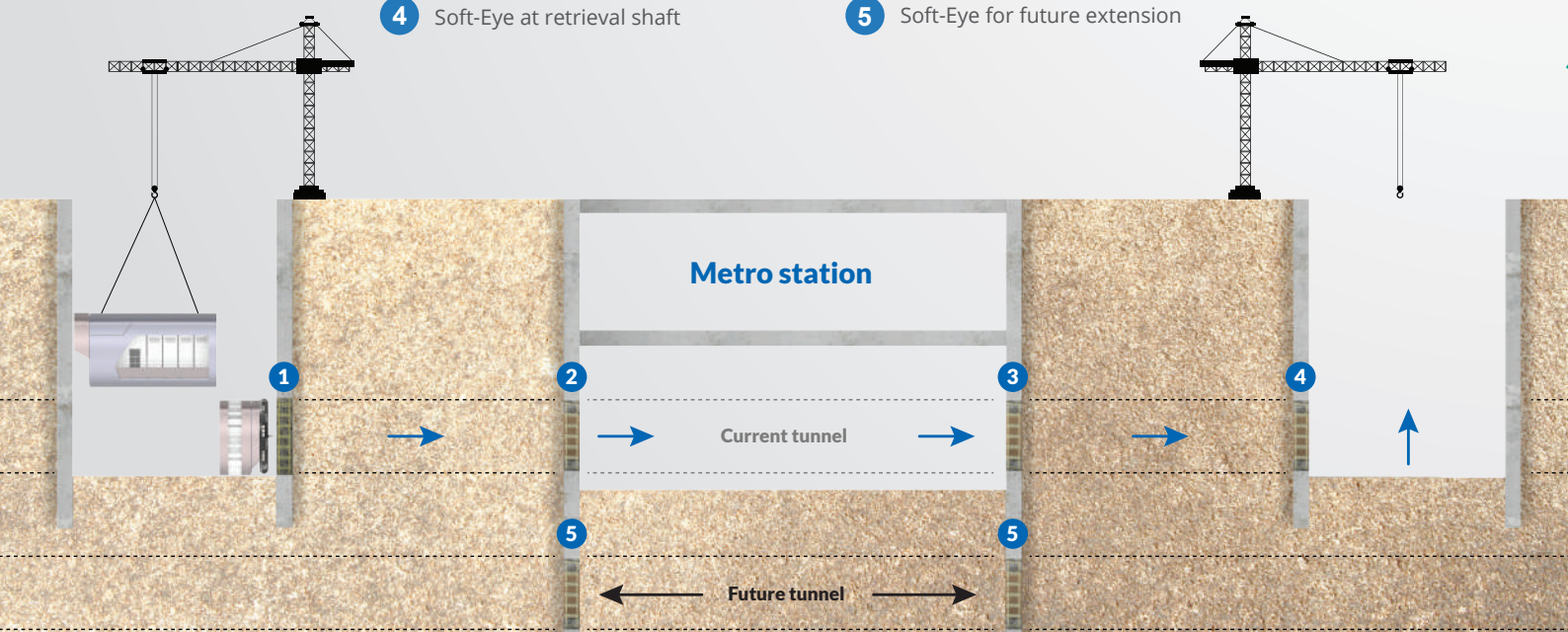
1 Soft-Eye at launching shaft

2 Soft-Eye at station break-in

3 Soft-Eye at station break-out

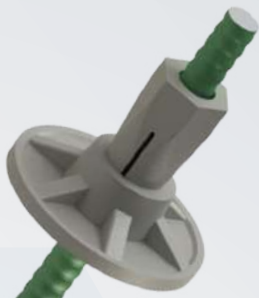
4 Soft-Eye at retrieval shaft

5 Soft-Eye for future extension



Tunnel Support

Soil Stabilization



GFRP ROCK-BOLT

GFRP fully threaded bar at its full potential



SELF-DRILLING ROCK-BOLT

One-step installation: drilling, grouting, anchoring



COMBINATION BOLT

Innovative GFRP solution for efficient tunnel excavation



ACTIVE ANCHOR

FRP post-tensioned anchoring solution



GFRP SOIL NAIL

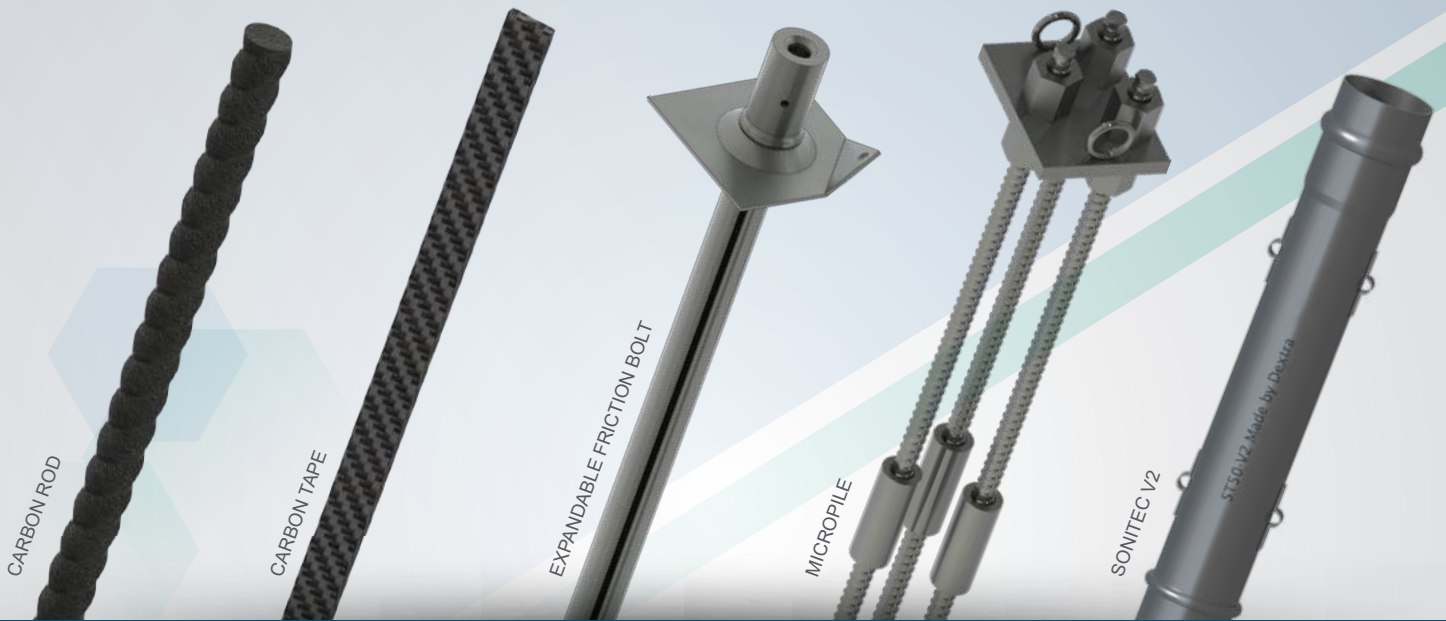
GFRP passive anchor solution for slope stabilization



STEEL GROUND ANCHOR

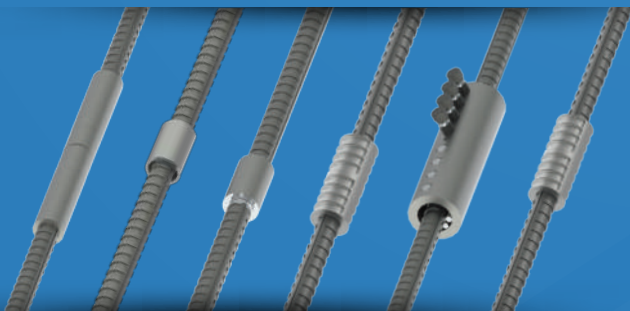
Active/Passive ground anchor system based on fully threaded bars

Additional Ground Engineering Solutions



Soil retention & deep foundation

Other Dextra Products



Concrete reinforcement products



Bar systems



For more information

Commercial presence
in more than

55 countries



Dextra

**HEADQUARTERS
THAILAND**
Dextra Manufacturing Co.,Ltd.
Tel: (66) 2 021 3800

CHINA
Dextra Building Products (Guangdong) Co.,Ltd.
Tel: (86) 20 2261 9901

HONG KONG
Dextra Pacific Ltd.
Tel: (852) 2511 8236

EUROPE
Dextra Europe SARL
Tel: (33) 1 45 53 70 82

MIDDLE EAST
Dextra Middle East FZE
Tel: (971) 4886 5620

INDIA
Dextra India Pvt.,Ltd.
Tel: (91) 22 2839 2694

NORTH AMERICA
Dextra America Inc.
Tel: (1) 206 742 6020

LATIN AMERICA
Dextra Latam
Tel: (507) 831 1422

BRAZIL
Dextra do Brasil
Tel: (55) 119 7577 8112